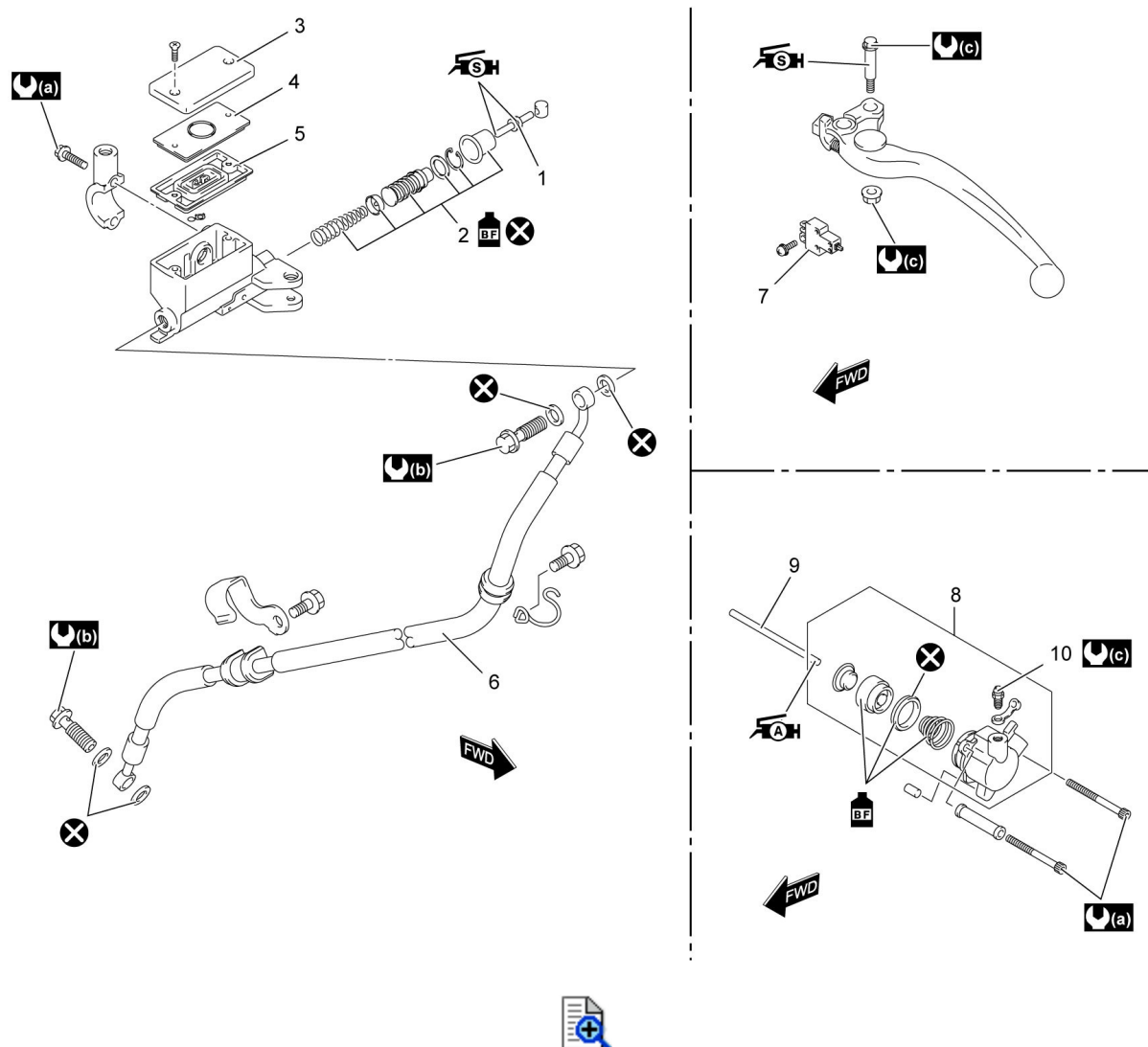


5C



## Clutch Control System Components



1.	Push rod	7.	Clutch lever position switch		6 N·m (0.6 kgf-m, 4.5 lbf-ft)
2.	Piston/cup set	8.	Clutch release cylinder		Apply brake fluid.
3.	Reservoir cap	9.	Clutch push rod (left)		Apply grease.
4.	Plate	10.	Clutch air bleeder valve		Apply silicone grease.
5.	Diaphragm		10 N·m (1.0 kgf-m, 7.5 lbf-ft)		Do not reuse.
6.	Clutch hose		23 N·m (2.3 kgf-m, 17.0 lbf-ft)		